

La matrice extracellulaire

synthèse des fibrilles de collagène

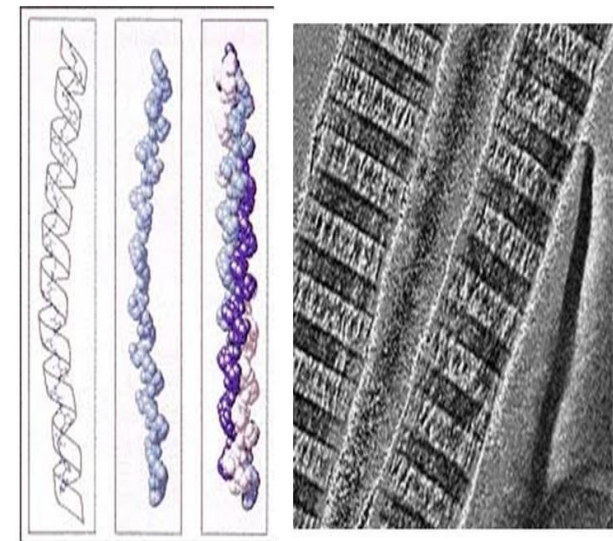
The diagram shows a cell with various organelles. A callout box highlights the process of collagen fibril synthesis. Below this, three panels detail the molecular steps:

- Panel 1:** Shows three polypeptide chains labeled α_1 , α_2 , and α_2 . The ends are marked as "extremités à éliminer" (ends to be removed).
- Panel 2:** Shows the three chains forming a triple helix structure. Reference: PDB:1bkv.
- Panel 3:** Shows the triple helix with yellow cross-links between chains, representing the role of hydroxylysine groups in strengthening the fibrils.

fibrille de collagène

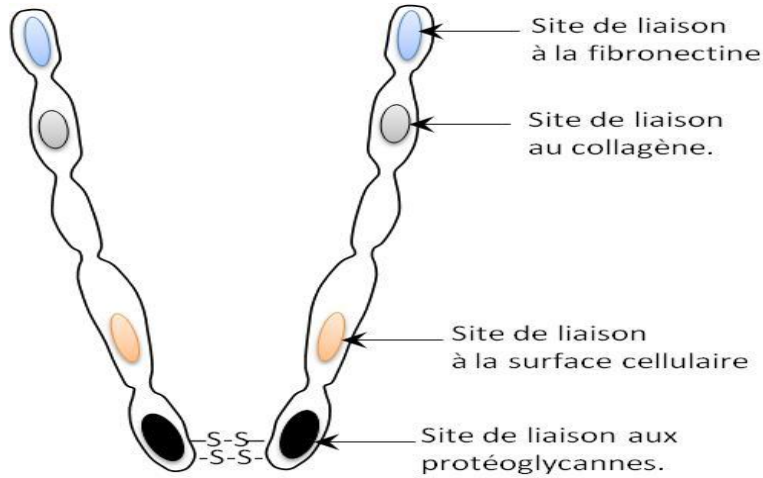
l'excision des extrémités de la triple hélice de procollagène induit l'assemblage spontané des fibrilles. Les liaisons par des groupes hydroxylysine renforcent les fibrilles. Plusieurs fibrilles forment des fibres de collagène (non montrée)

protéine de structure : le collagène

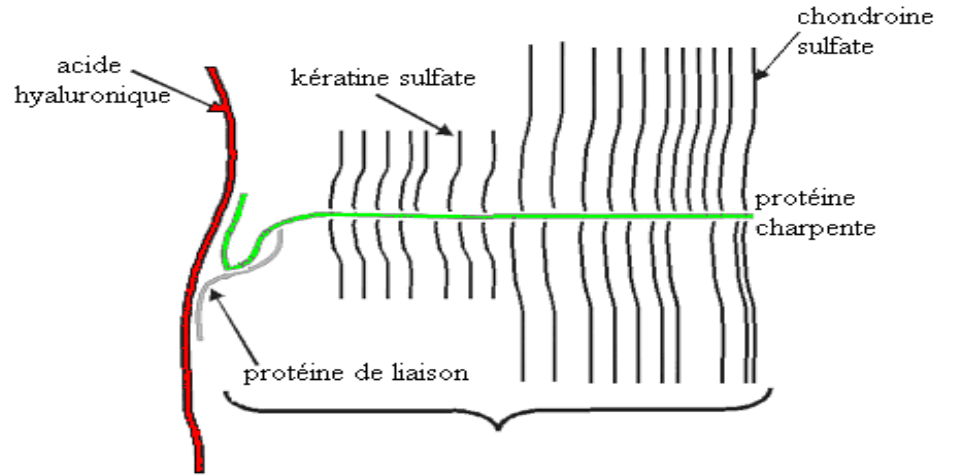


Le collagène

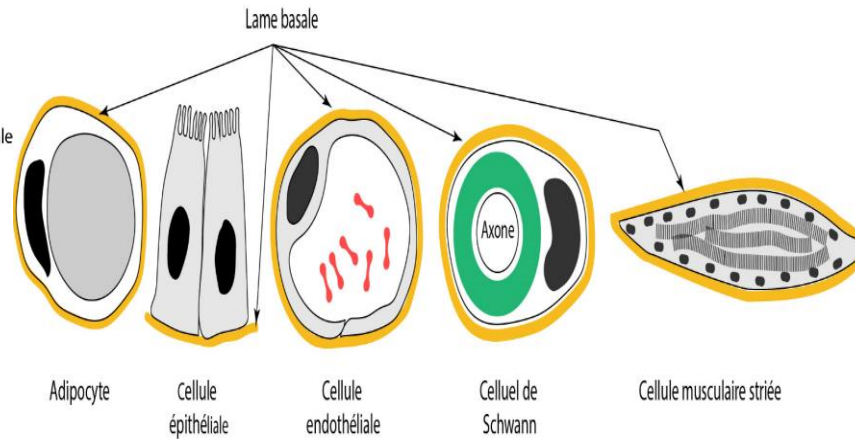
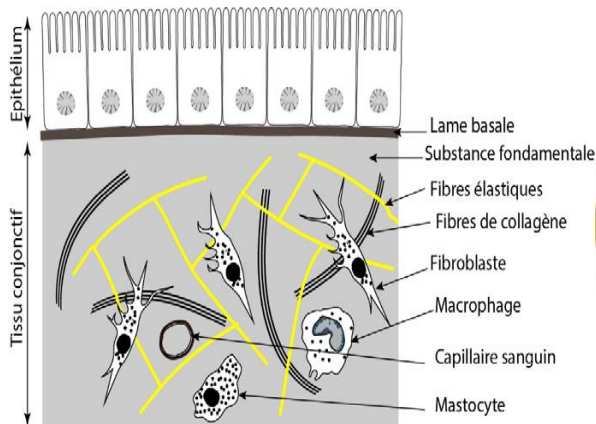
collagène I



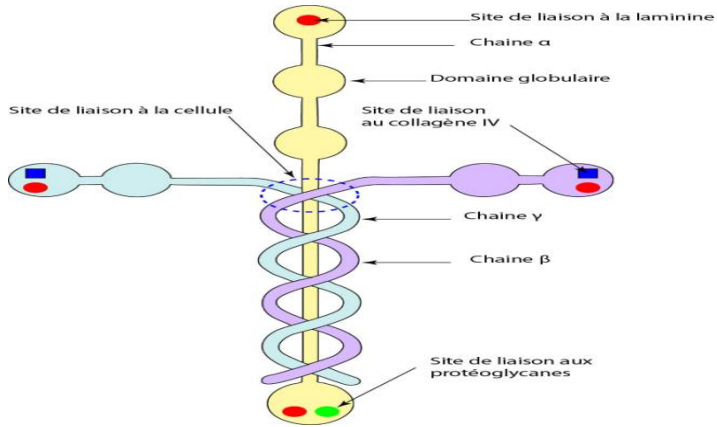
Structure d'un dimère de fibronectine



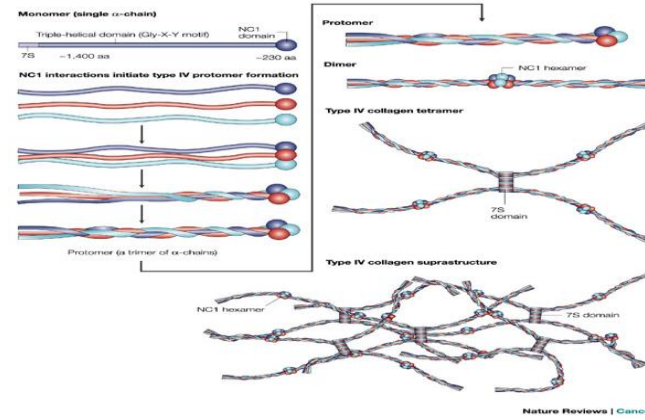
Protéoglycane



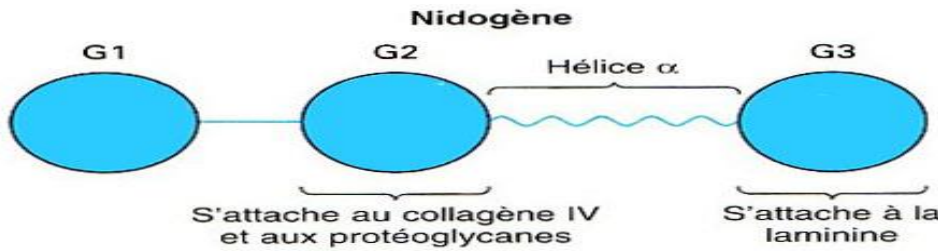
Positions de la lame basale



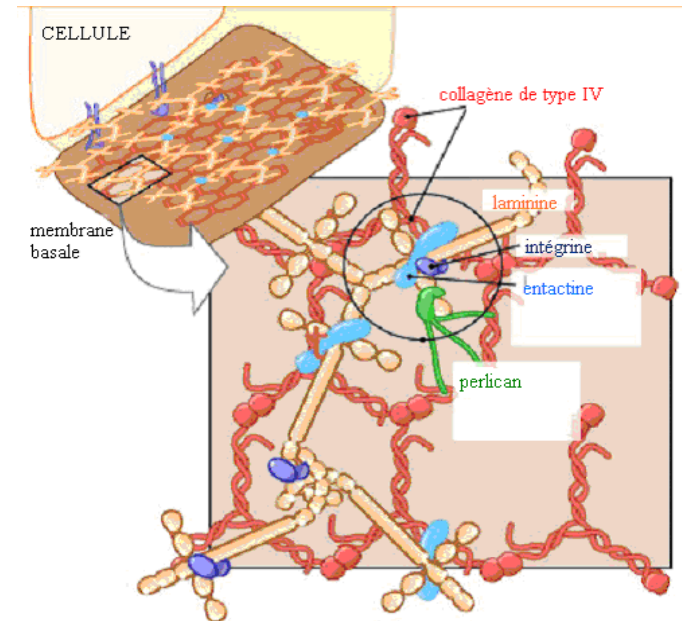
La laminine



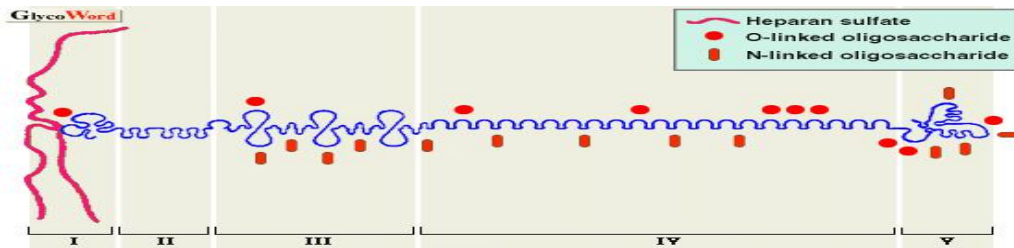
Collagène de type IV



Le nidogène



La lame basale



Le perlecan